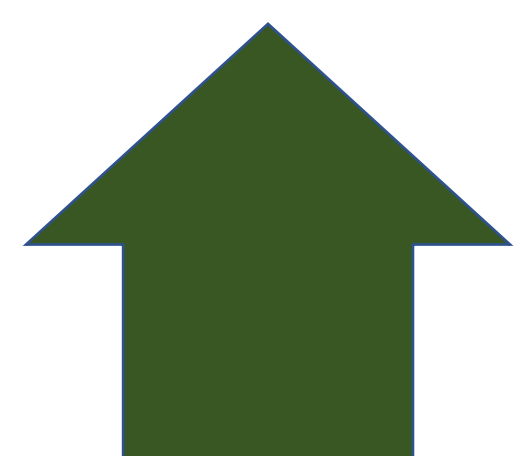


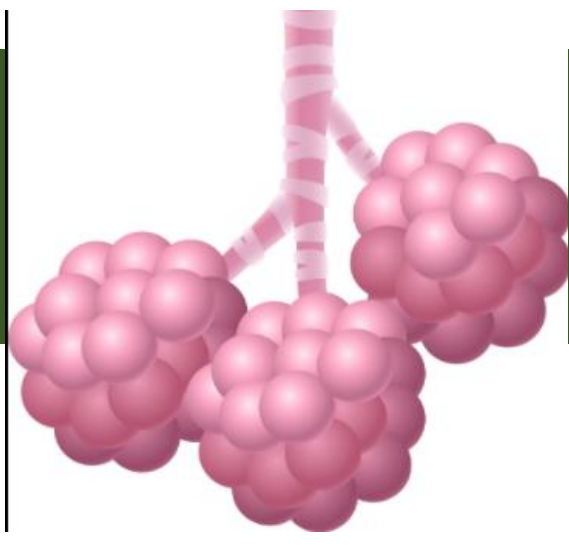
# Biology Triple KS4

Blue Boxes indicate in which paper the topic will be assessed



**CB8 – Exchange and Transport in animals**

**Paper 2**



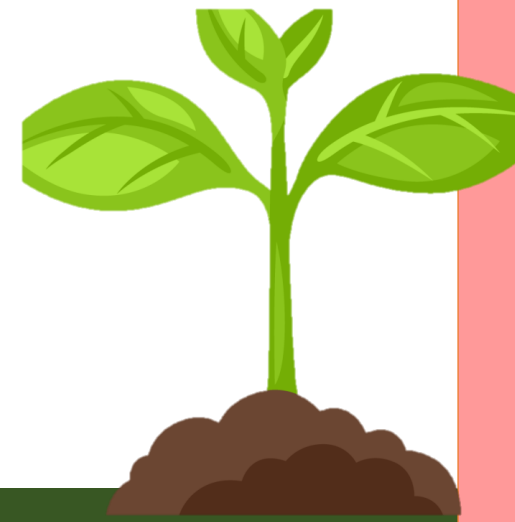
**CB9 – Ecosystems and Material Cycles**

**Paper 2**



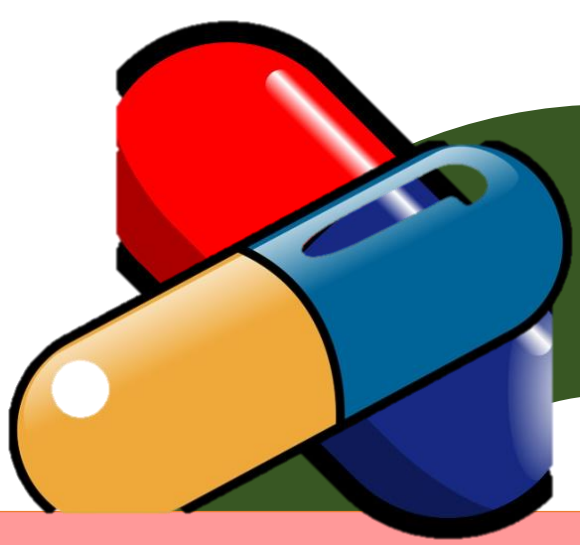
**CB7 – Animal Coordination, Control and Homeostasis**

**Paper 2**



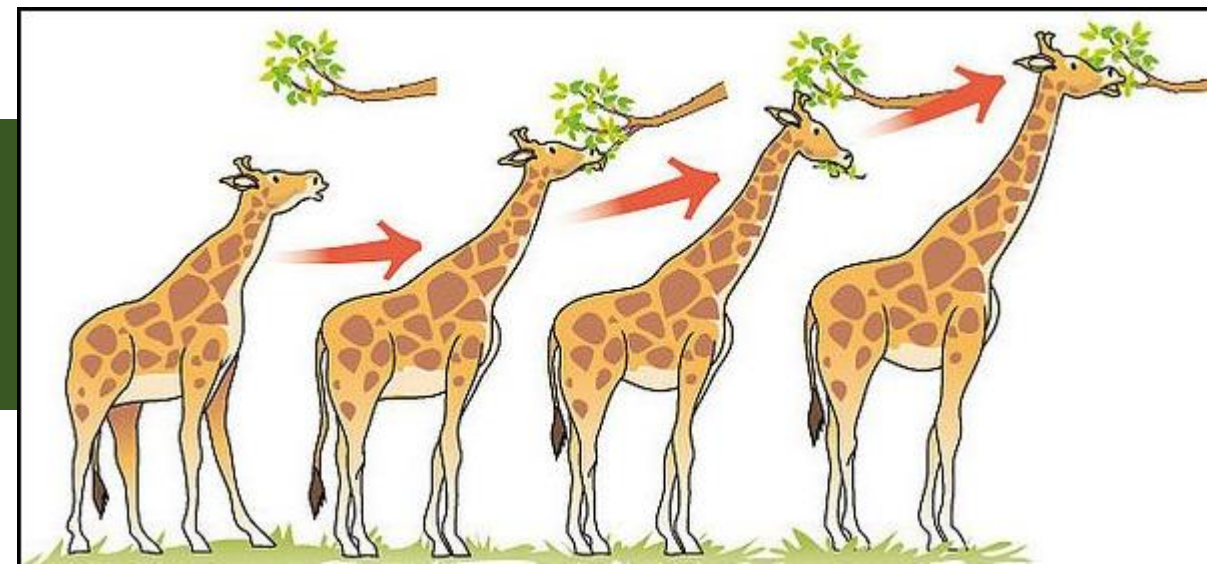
**CB6 – Plant Structures & their Function**

**Paper 2**



**CB5 – Health, Disease & Development of Medicines**

**Paper 1**



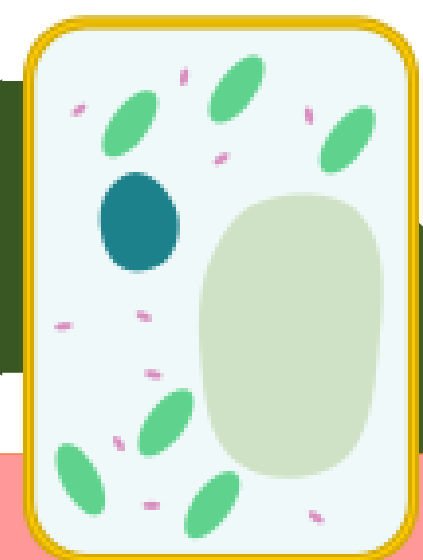
**CB4 – Natural Selection and Genetic Modification**

**Paper 1**



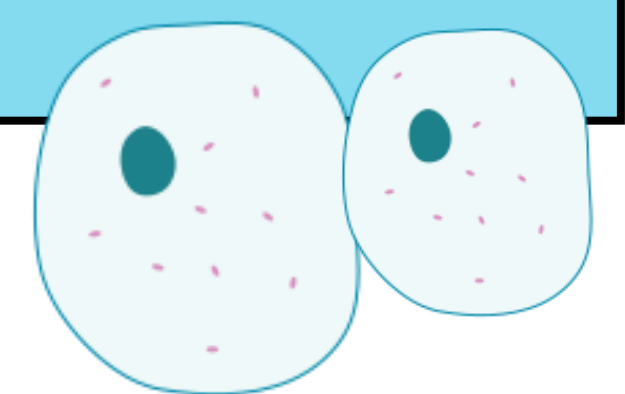
**CB3 - Genetics**

**Paper 1**



**CB2 – Cells and Control**

**Paper 1**



**CB1 – Key Concepts in Biology**

**Paper 1 & 2**

**It's not Rocket Science  
(Numeracy and Literacy in Science)**

